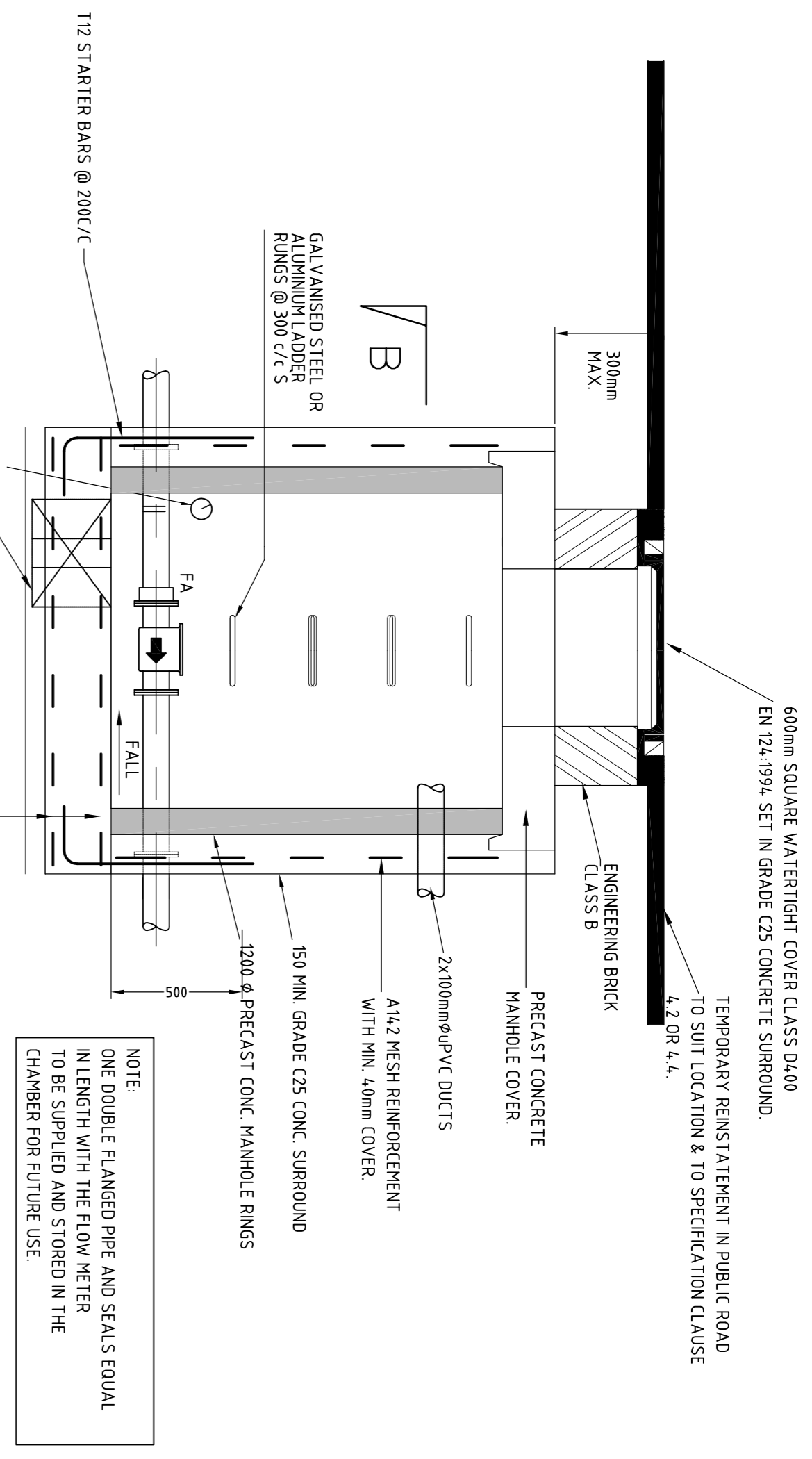
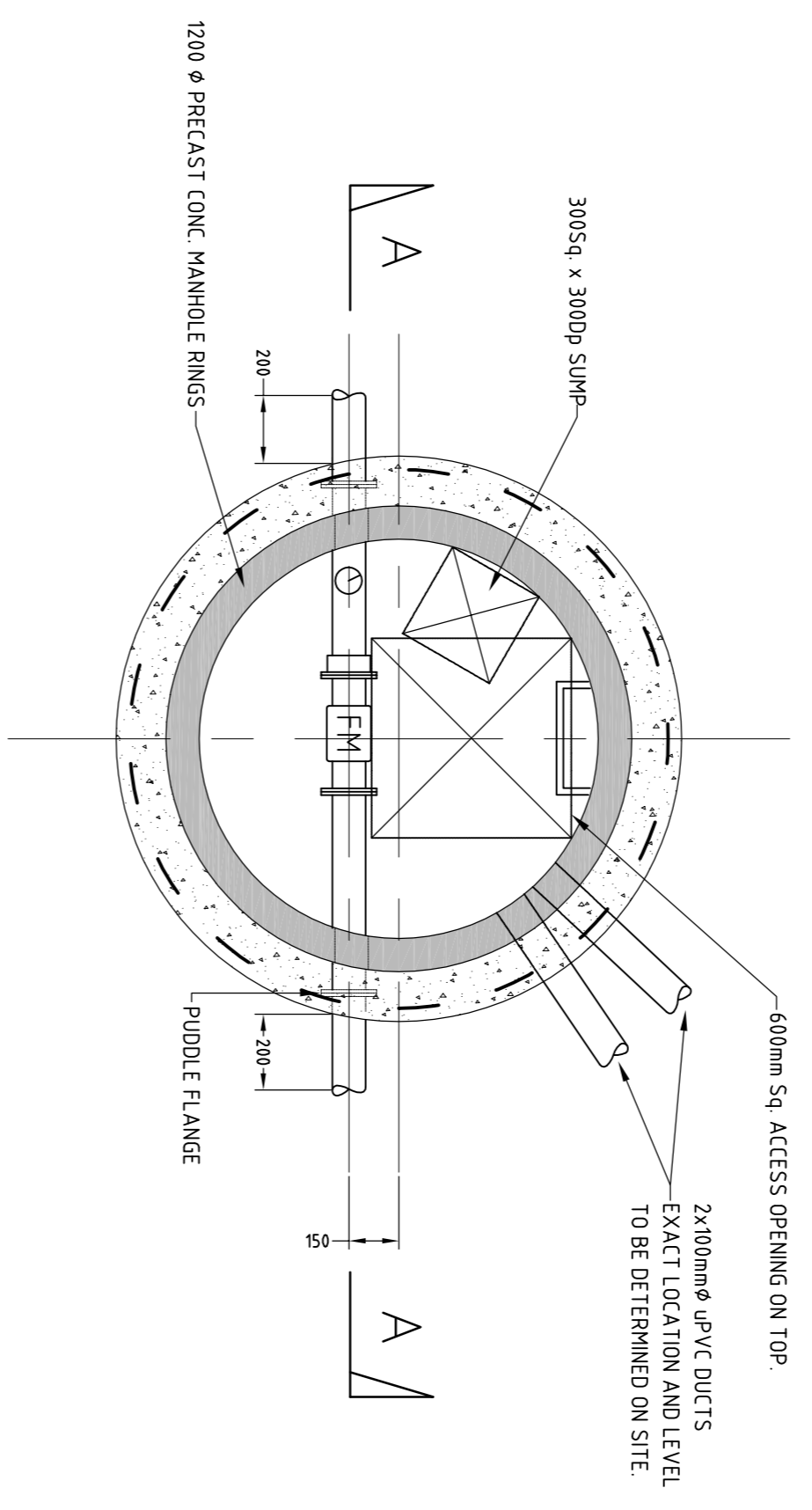
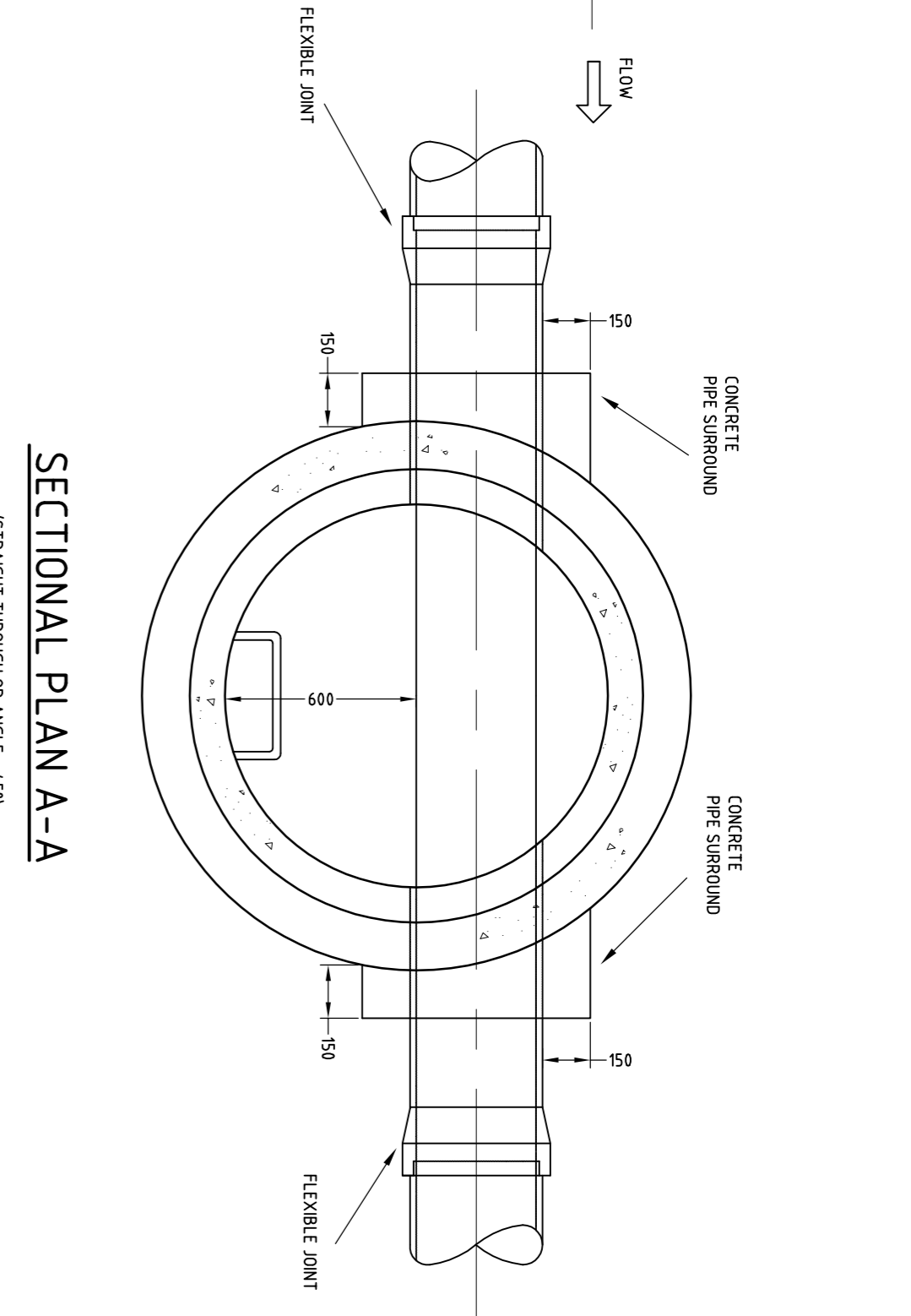
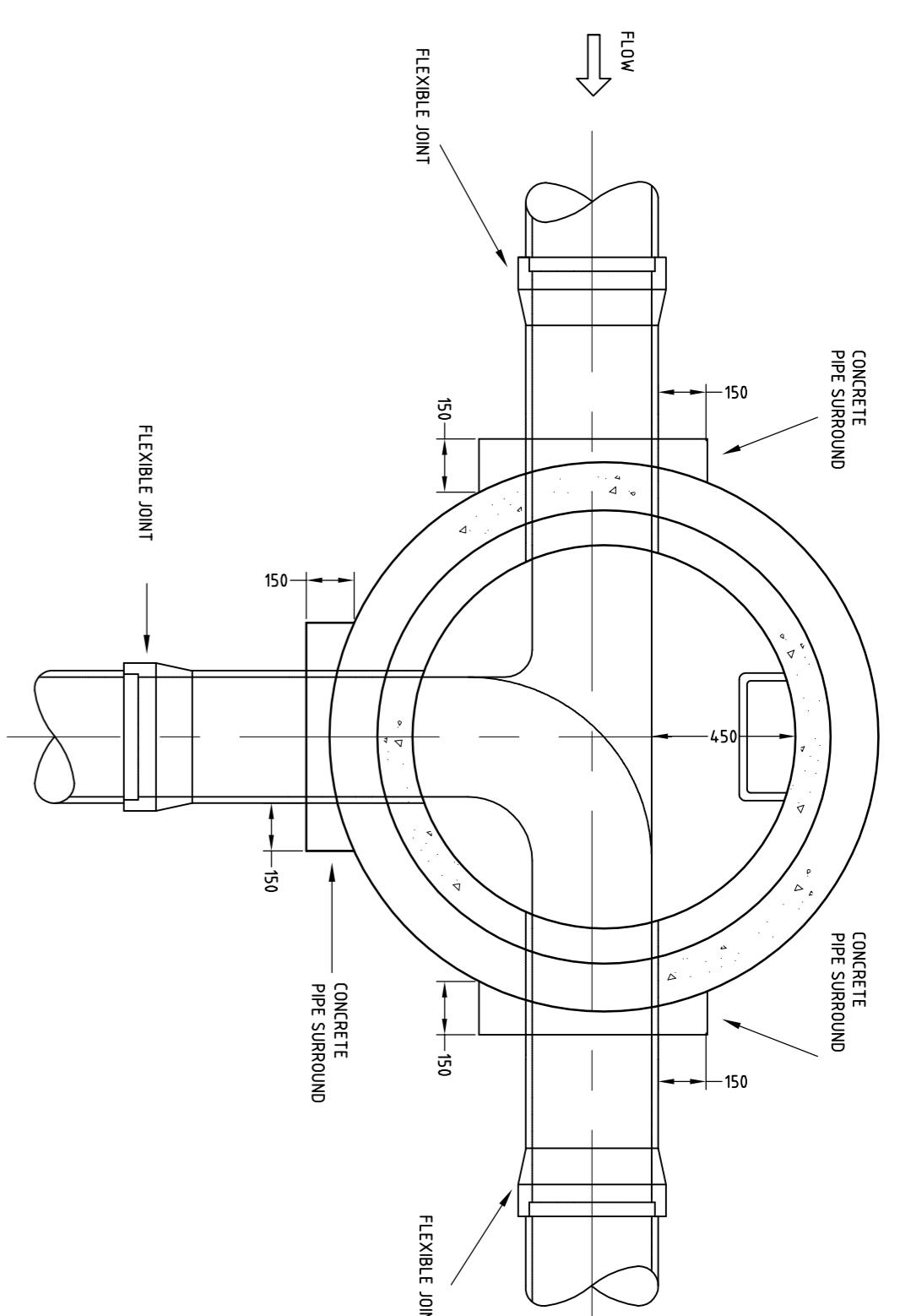


600mm SQUARE WATERTIGHT COVER CLASS D400
EN 124-1994, SET IN GRADE C25 CONCRETE SURROUND.

TEMPORARY REINSTATEMENT IN PUBLIC ROAD
TO SUIT LOCATION & TO SPECIFICATION CLASS
4,2 OR 4,4.



NOTE:
ONE DOUBLE FLANGED PIPE AND SEALS EQUAL
IN LENGTH WITH THE FLOW METER
TO BE SUPPLIED AND STORED IN THE
CHAMBER FOR FUTURE USE.

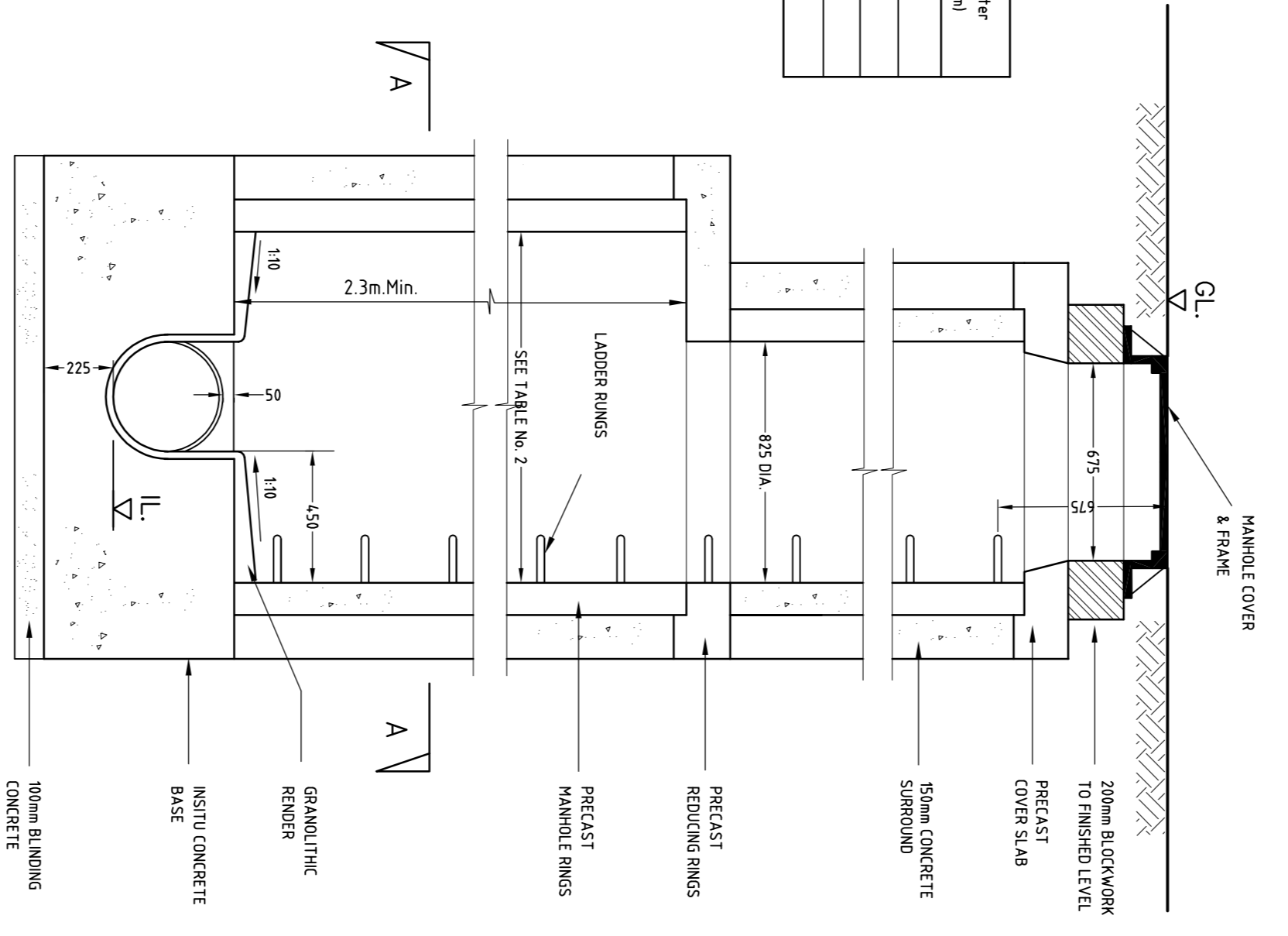


SECTIONAL PLAN B-B

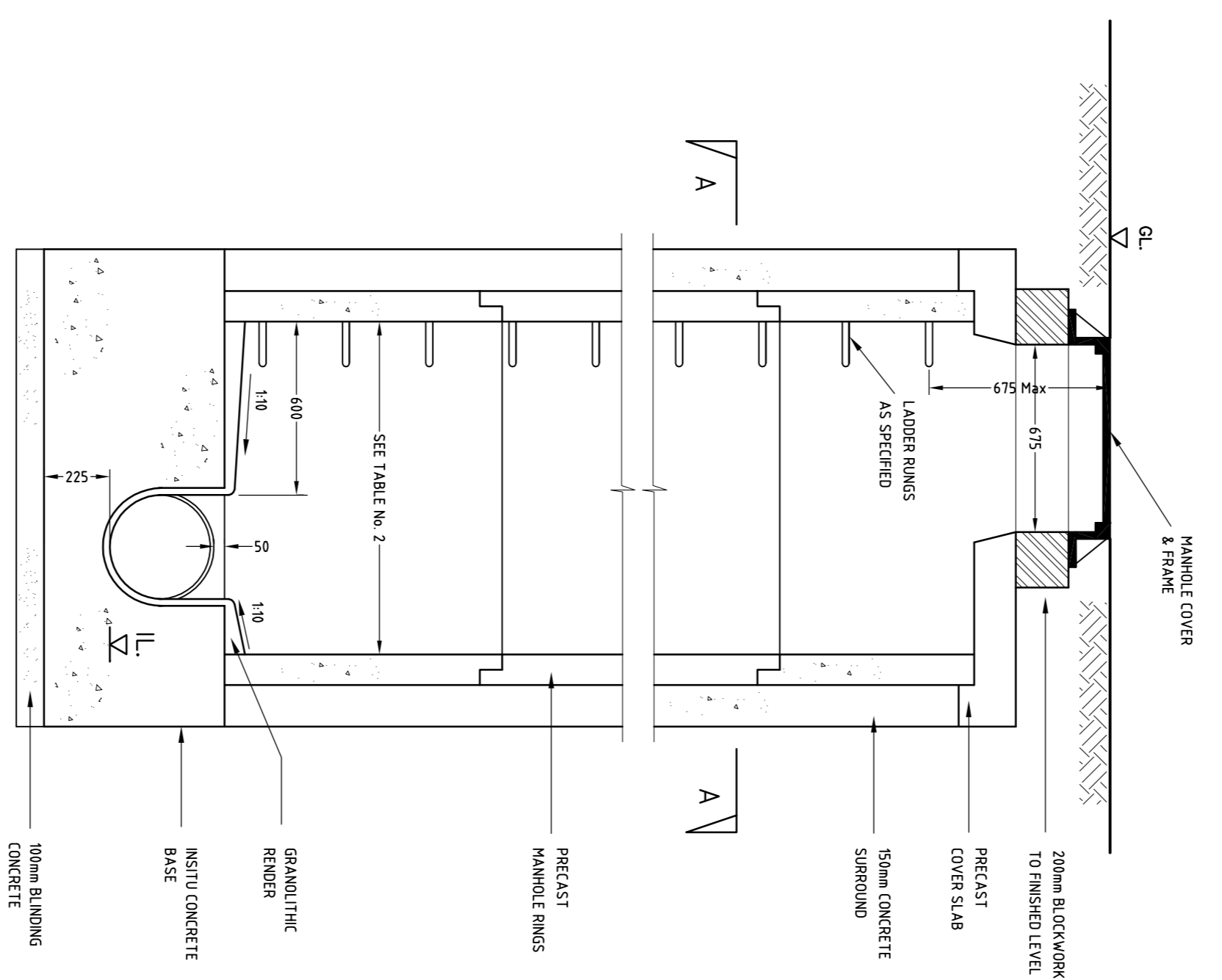
METER CHAMBER
NOT TO SCALE

TABLE NO.2

Diameter of largest pipe in manhole (mm)	Internal diameter of manhole (mm)
Less than 375	1200
375 - 450	1350
500 - 700	1500
750 - 900	1800

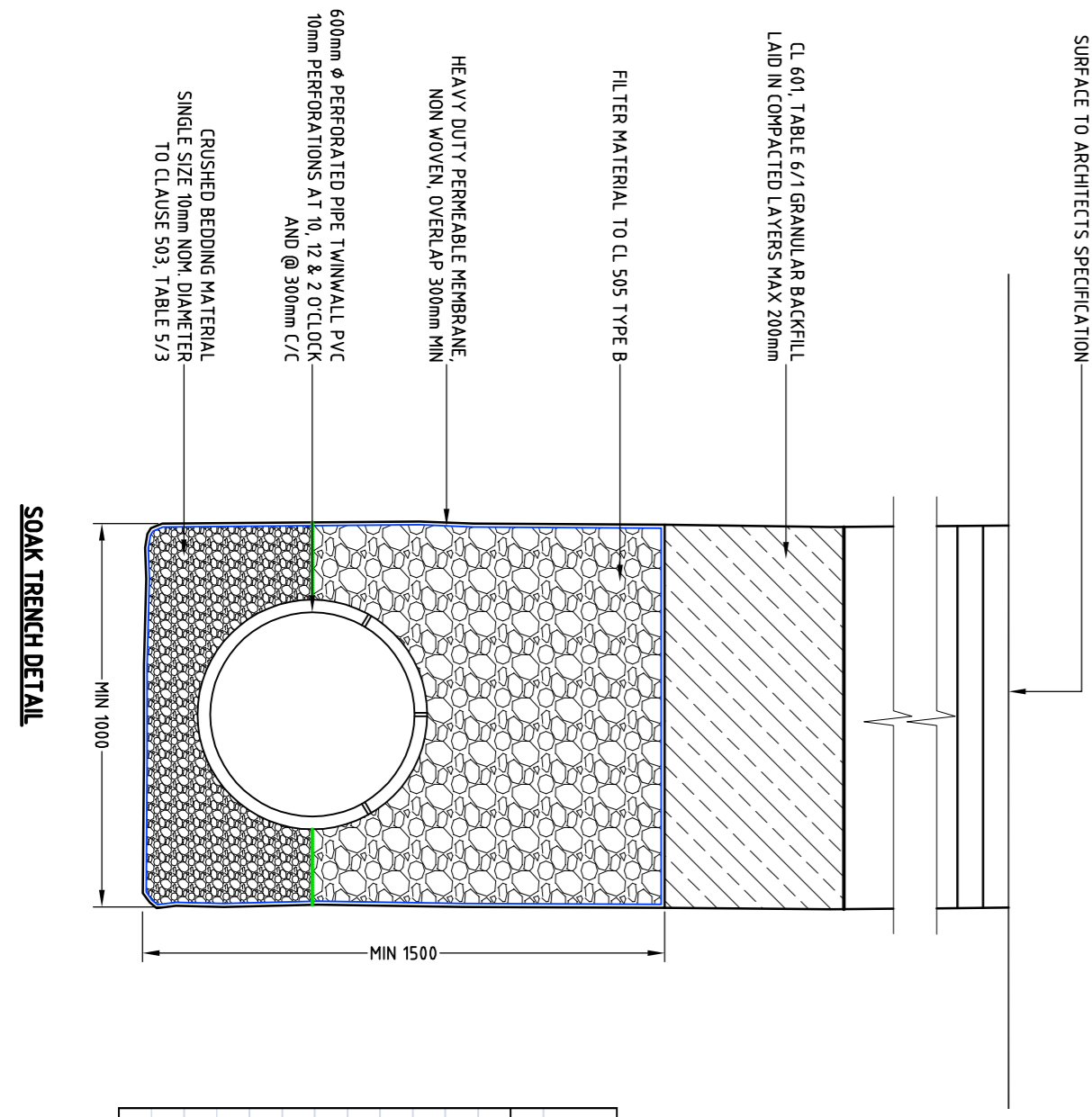


TYPE A MANHOLE
DEPTH FROM G.L. TO SOFFIT OF PIPE 3.0 TO 6.0m

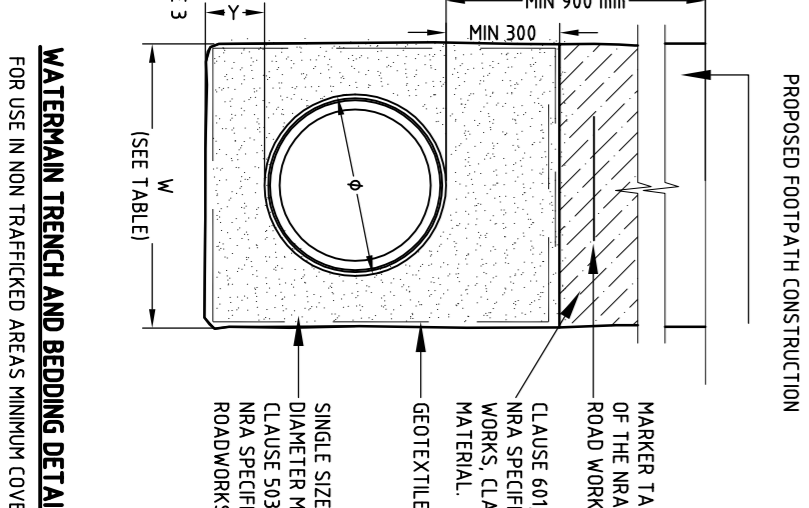
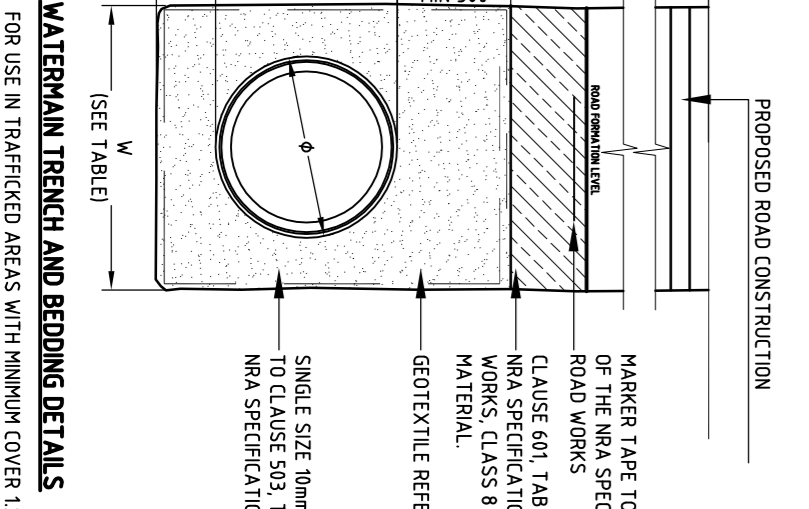
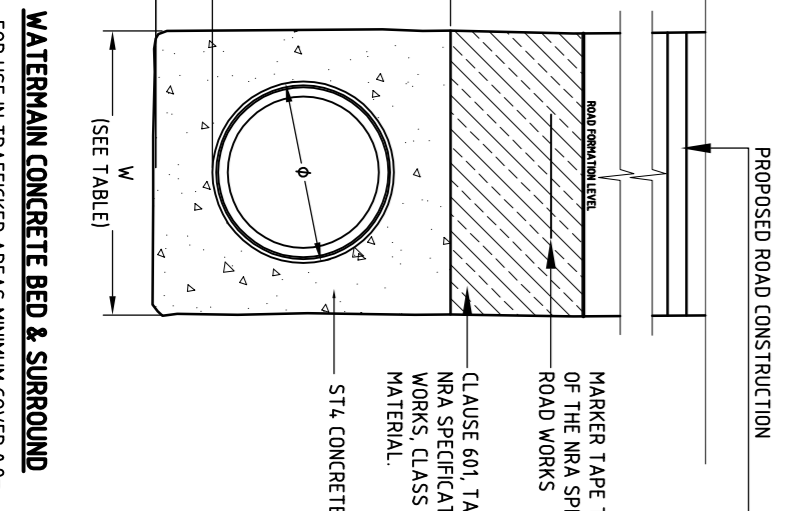


SURFACE WATER MANHOLE
DEPTH FROM G.L. TO SOFFIT OF PIPE 3.0m

NOT TO BE USED FOR CONSTRUCTION



PIPE Ø (mm)	TRENCH SURROUND WIDTH (mm)	H (mm)
80	500	400
100	500	400
150	600	450
200	600	450
250	750	650
300	750	650
350	750	750
400	900	850
450	900	850
500	1000	850
1050	2000	1600
1200	2400	1750



- NOTES:**
1. ALL SIDES SHALL BE VERTICAL FROM BOTTOM OF TRENCH TO AT LEAST 300mm OVER CROWN OF PIPE WHERE THE DEPTH OF COVER OVER THE PIPE BARREL EXCEEDS 700mm. THE LEVEL TO A HEIGHT OF 300mm OVER PIPE BARREL. TRENCH WIDTH SHALL BE RESTRICTED TO 200 FROM FORMATION.
 2. SAND PIPE BEDDING LAYING AND SURROUND SHALL COMPLY WITH CLASS 5/3 OF THE NKA SPECIFICATION FOR ROADWORKS.
 3. DIMENSION 'Y' SHALL BE 200mm DEPTH FOR PRELIMINARY WORKS AND 550mm DEPTH FOR PERMANENT WORKS.
 4. IN WET FINE-GRAINED SOILS THE MARGINATION OF FINE SOIL PARTICLES INTO THE Voids OF THE BEDDING IS TO BE PREVENTED BY SURROUNDING THE GRANULAR MATERIAL WITH A GEOTEXTILE FILTER COMPLYING WITH CLASS 5/17 OF THE NKA SPECIFICATION FOR ROAD WORKS.
 5. TRENCH FILL MATERIAL SHALL COMPLY WITH CLASS 6/1 OF THE NKA SPECIFICATION FOR ROAD WORKS AND SHALL BE READY TO COMPACTABLE MATERIAL FREE FROM TREE ROOTS, VEGETABLE MATTER, LIMESTONE, RUBBER, FROZEN SOIL, CLAY CLUMPS EXCEEDING 75mm AND STONE EXCEEDING 25mm NOMINAL DIAMETER.
 6. BEDDING MATERIAL FROM TRENCH FORMATION TO PIPE CROWN LEVEL SHALL BE WELL COMPACTED IN 150mm LAYERS. SECONDARY BEDDING FROM PIPE CROWN TO 300mm ABOVE CROWN SHALL BE LIGHTLY COMPACTED BY HAND IN 150mm LAYERS.
 7. THIS DRAWING IS COPYRIGHT AND IS NOT TO BE COPIED OR REPRODUCED IN PART OR IN WHOLE WITHOUT THE WRITTEN APPROVAL OF THE ENGINEERS.

REV/DATE	DESCRIPTION	BY/CHKD/APP'D
Client	Blumont Developments (Fihouse) Limited	
<p>PHM consulting Civil - Structural - Environmental 11 Midway Street, Limerick, Ireland V94 XW94 Tel: +353 (0)61 376200 Email: info@phm.ie Web: www.phm.ie</p>		
<p>STRATEGIC HOUSING DEVELOPMENT AT FIFHOUSE ROAD DUBLIN 24 WATER SERVICES DETAILS</p>		
Scale	AS SHOWN	Sheet
Drawn	AS SHOWN	110-36
Check	AS SHOWN	14.1
Approved	AS SHOWN	A1